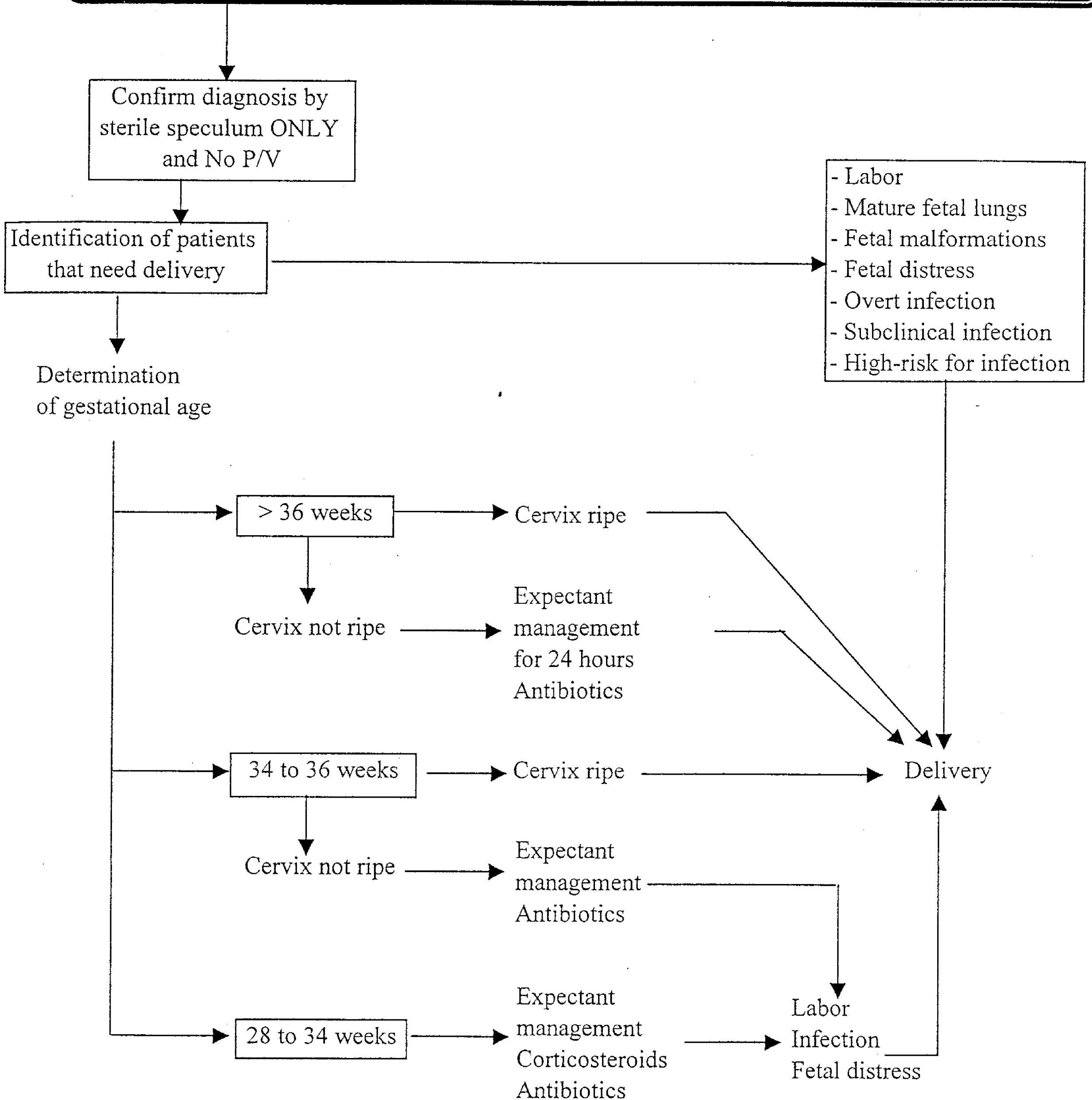


Premature Rupture of the Membranes



Premature Labor

Take history & examination

Investigation
- U/S
- High Vaginal Swab

Is the cervical dilatation > 4

Yes

Delivery better in a facility with NICU

No

- Maternal disease
- IUFD
- CFMF
- Chorioamnionitis
- Fetal distress or IUGR

Is there a contraindication to continue pregnancy?

Yes

No

Is GA < 34 weeks?

Yes

Tocolysis

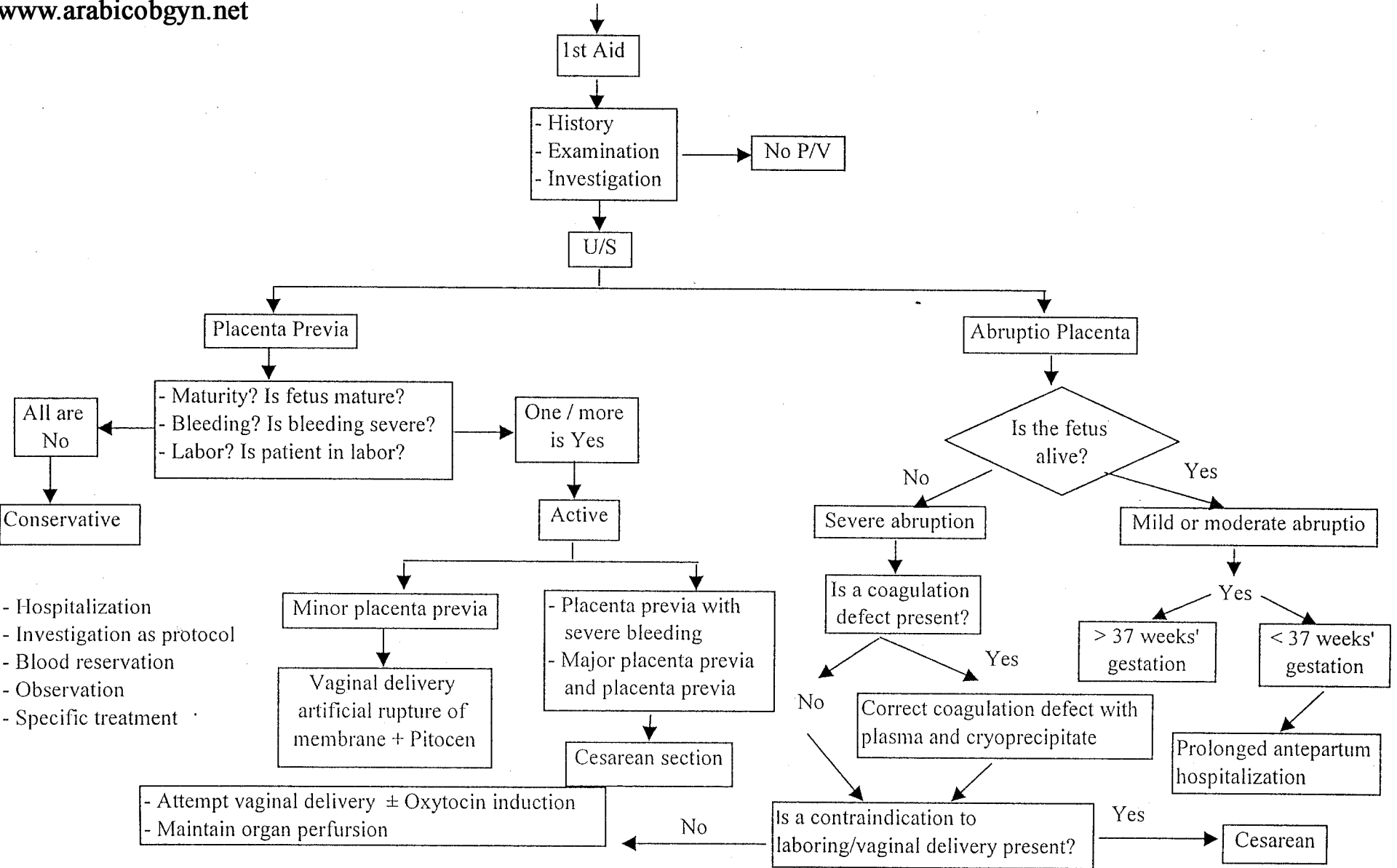
- Tocolysis
- Corticosteroids

Refer to a facility with Neonatal ICU

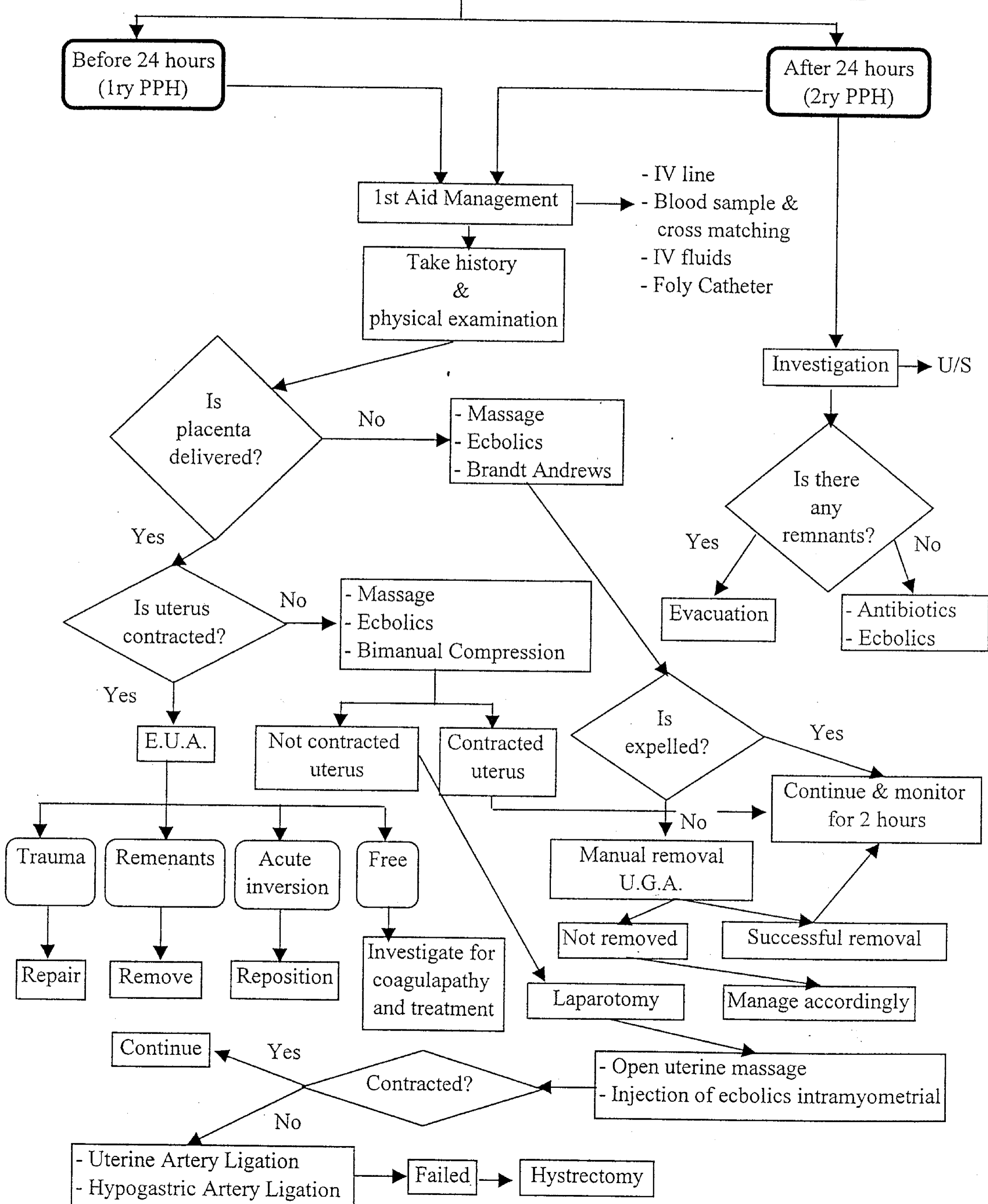
N.B. If associated with PROM see PROM Flow Chart

Antepartum Hemorrhage (Vaginal Bleeding after 20 Weeks Gestation)

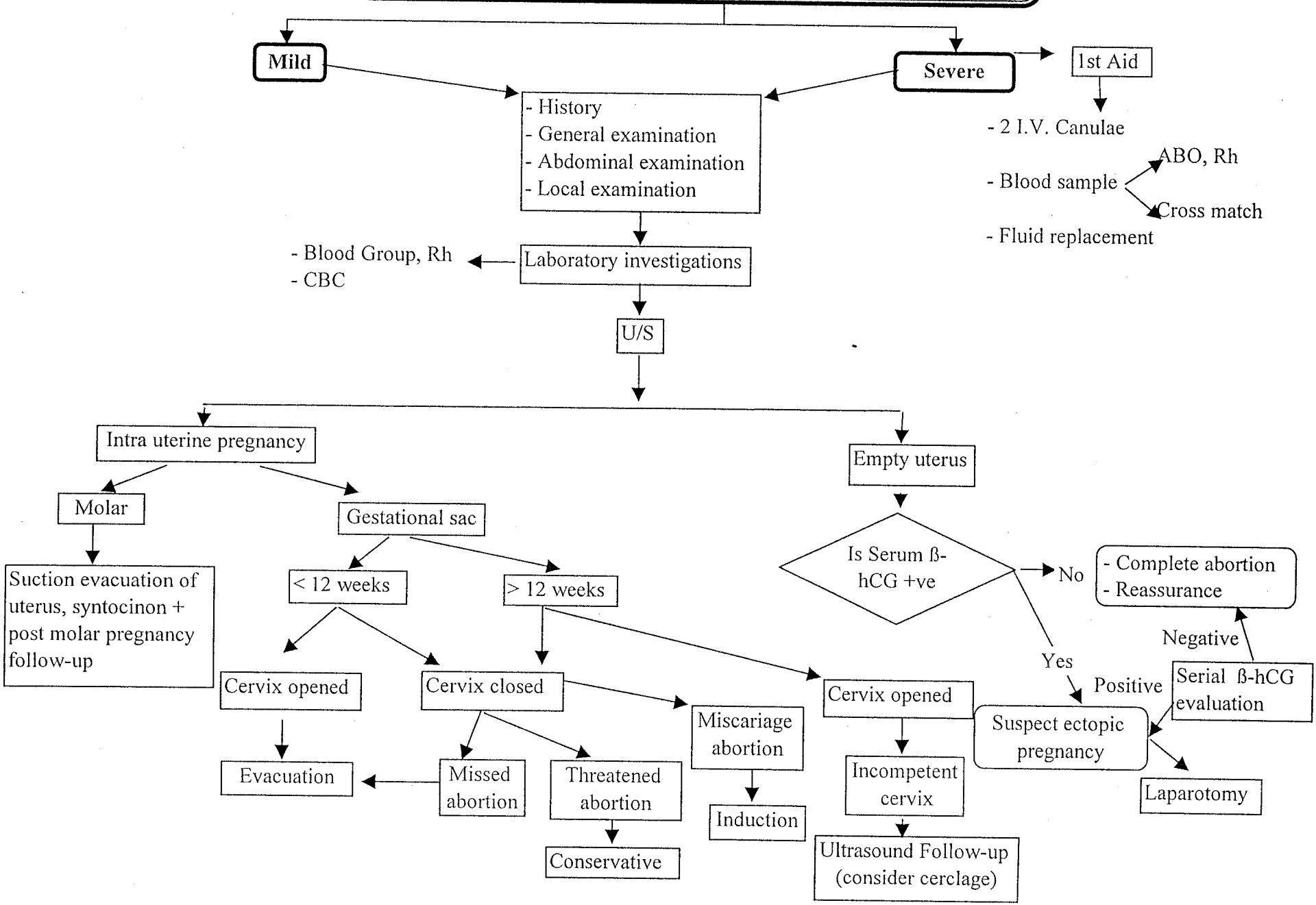
www.arabicobgyn.net



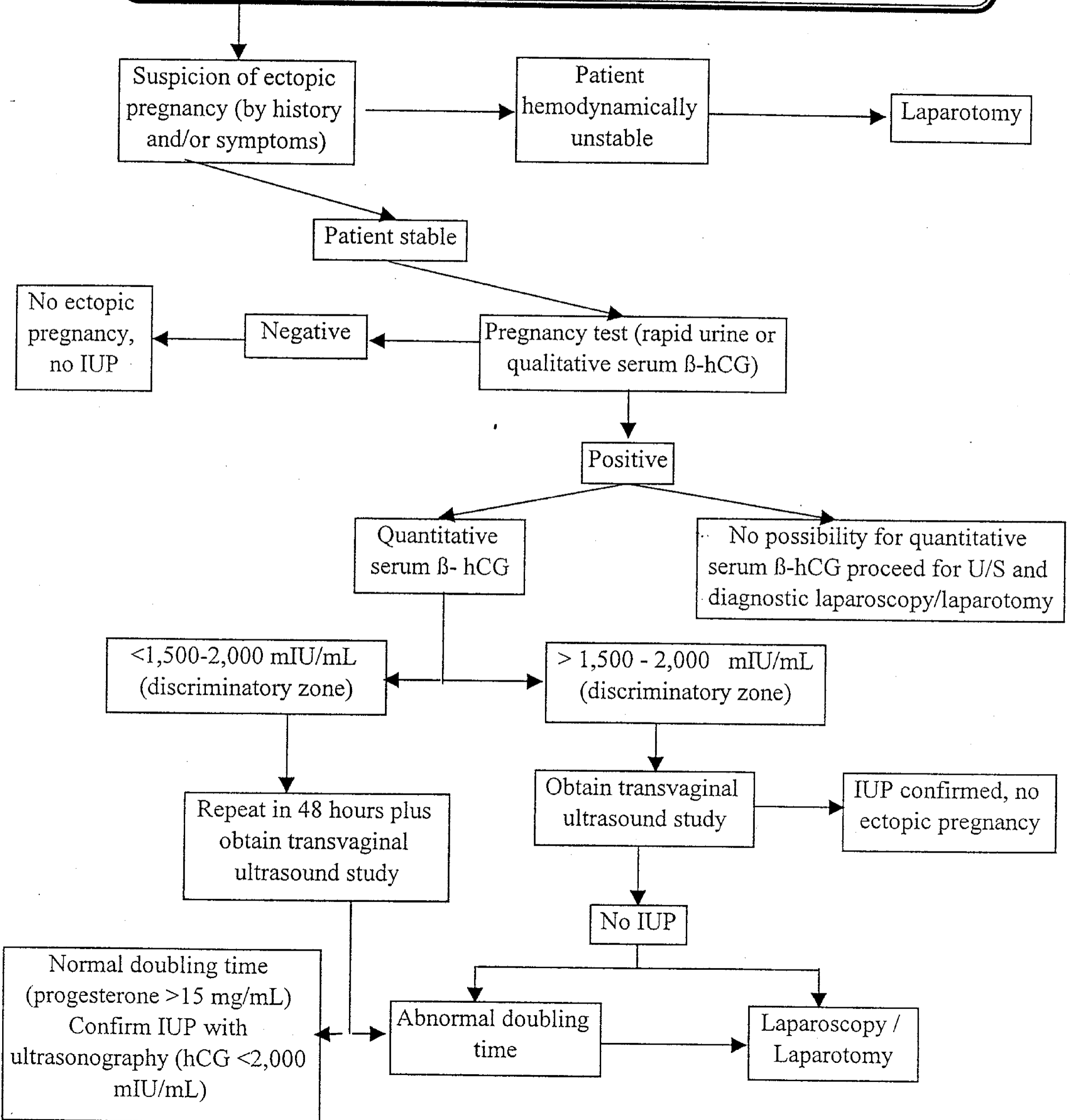
Post Partum Hemorrhage



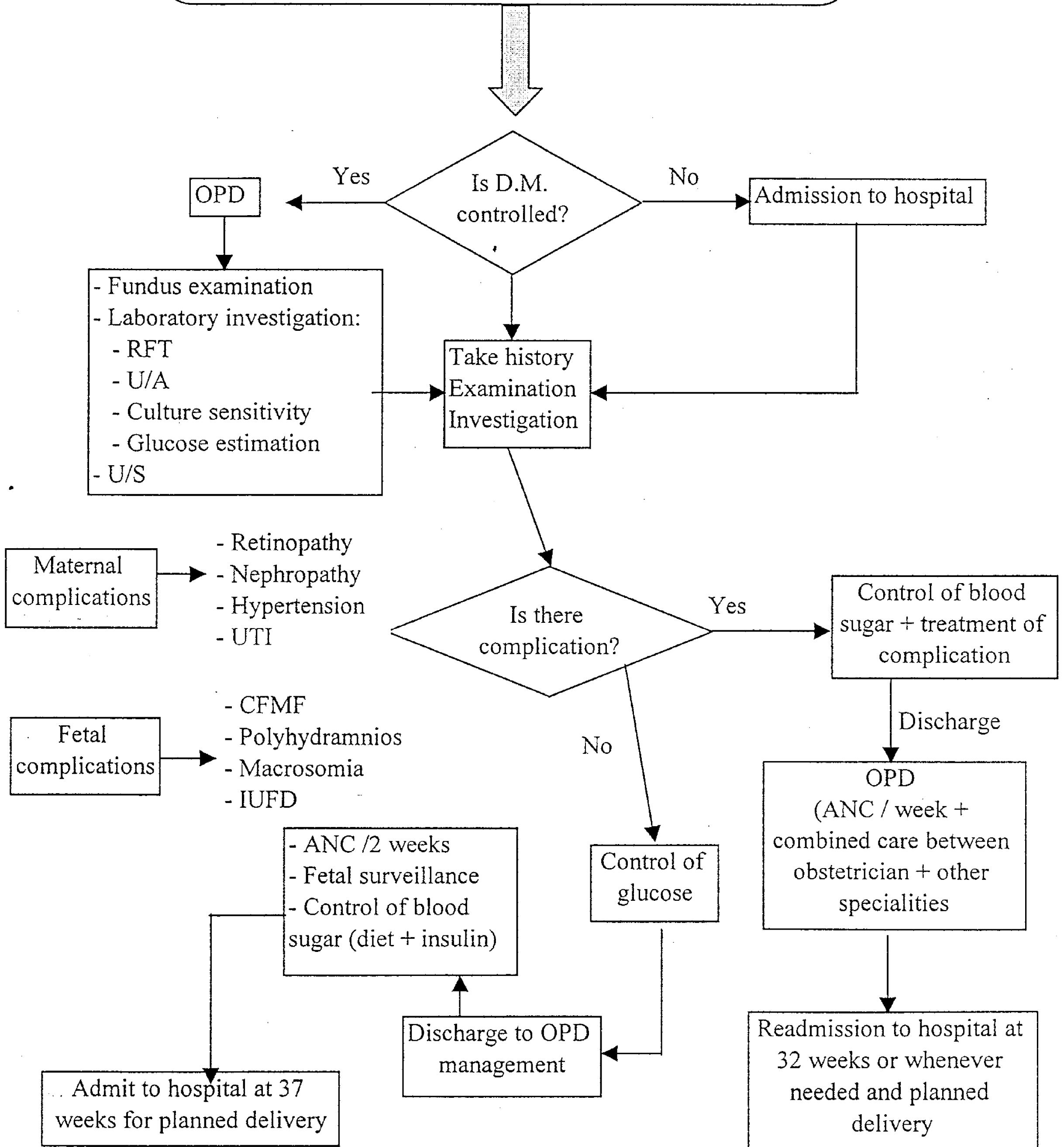
Bleeding < 20 weeks



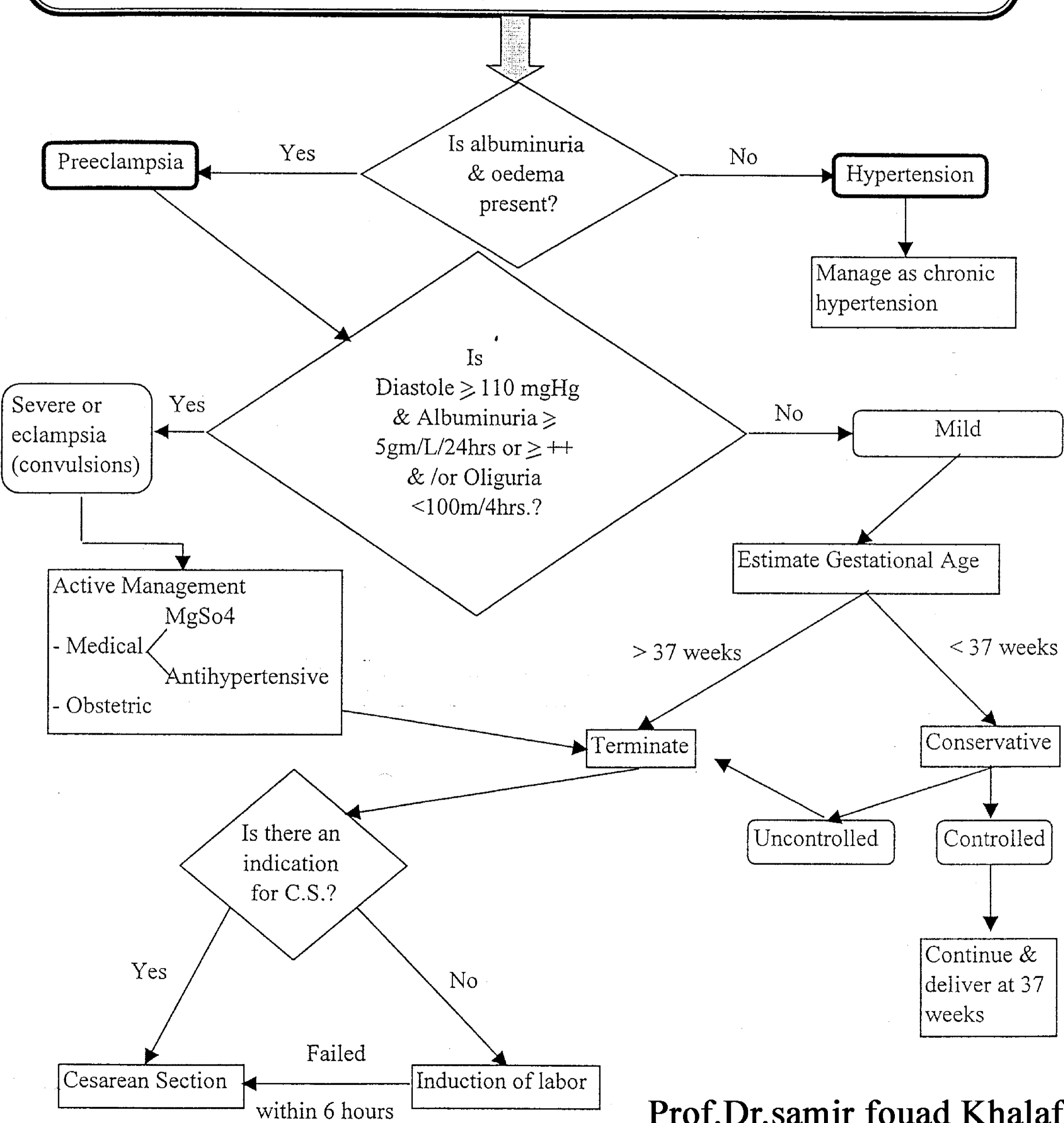
Ectopic Pregnancy



Diabetes Mellitus with Pregnancy



Pregnant Woman with Blood Pressure > 140/90



Investigation: As protocol

Prof. Dr. Samir Fouad Khalaf

www.arabicobgyn.net

cairo0020123158046

Heart Disease with Pregnancy

(A team of obstetrician & cardiologist)

